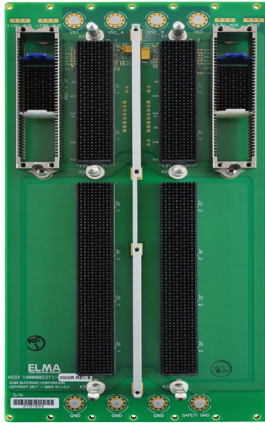
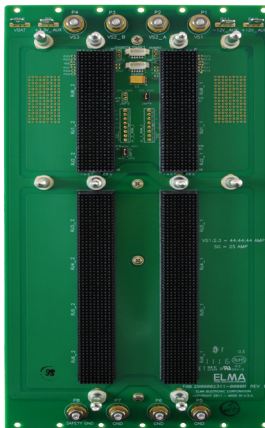


## Description



Front View



Rear View

The Elma Bustronic 6U VPX 2-slot test backplanes are unique tools that enable developers and system integrators to test VPX boards. The backplane allows the user to power up test their J1 fabric connections as they would be interconnected in the target application. Signals can be passed from one slot to the next via high speed interconnecting cables.

Additional 2-slot Test Backplanes can be used in a larger chassis to interconnect the J1 primary fabric in any serial topology desired. Signals in any other connector position may be interconnected or accessed using optional MultiGig cable headers or typical commercial RTM modules. Note that rear cables and RTM connectors cannot be used at the same time in the same slot.

Unlike other access methods, such as rear VPX cables alone or special high speed RTM break out boards, the Elma Bustronic 2-slot test backplane allows primary J1 fabric signals to be accessed/interconnected/injected without interfering with the use of an existing RTM module designed for J2-J6 IO connector signals. Custom backplanes are often required to interconnect the primary fabric signals between multiple VPX blades for a specific application. However, it is desirable to be able to connect two or more such blades with a test backplane before investing the time or expense of a custom VPX backplane.

## Features

- For convenient testing of VPX/OpenVPX boards
- Designed to meet the latest VITA 46.0 and VITA 65 specifications
- Accepts either 3U or 6U VPX cards by use of the configuration jumpers on the rear of the backplane and a 3U shelf divider
- Wider slot pitch allows more space for attaching to probes
- Allows simultaneous access of J1 fabric signals with standard VPX RTM module for J2-J6 signals
- More than two VPX modules may be interconnected by using additional 2-slot test backplanes

## Related Products and Applications

### Highly integrated applications such as:

- Open frame test chassis - need a chassis for your backplane?
- VPX Embedded Computing Products - SBCs, Switches, Storage and More



- VPX board extenders
- Load Boards
- Rear Transition Modules (RTMs)
- Test and power modules
- VPX Cabling assemblies

**VPX**

# VPX Test Backplane



Backplanes



VPX

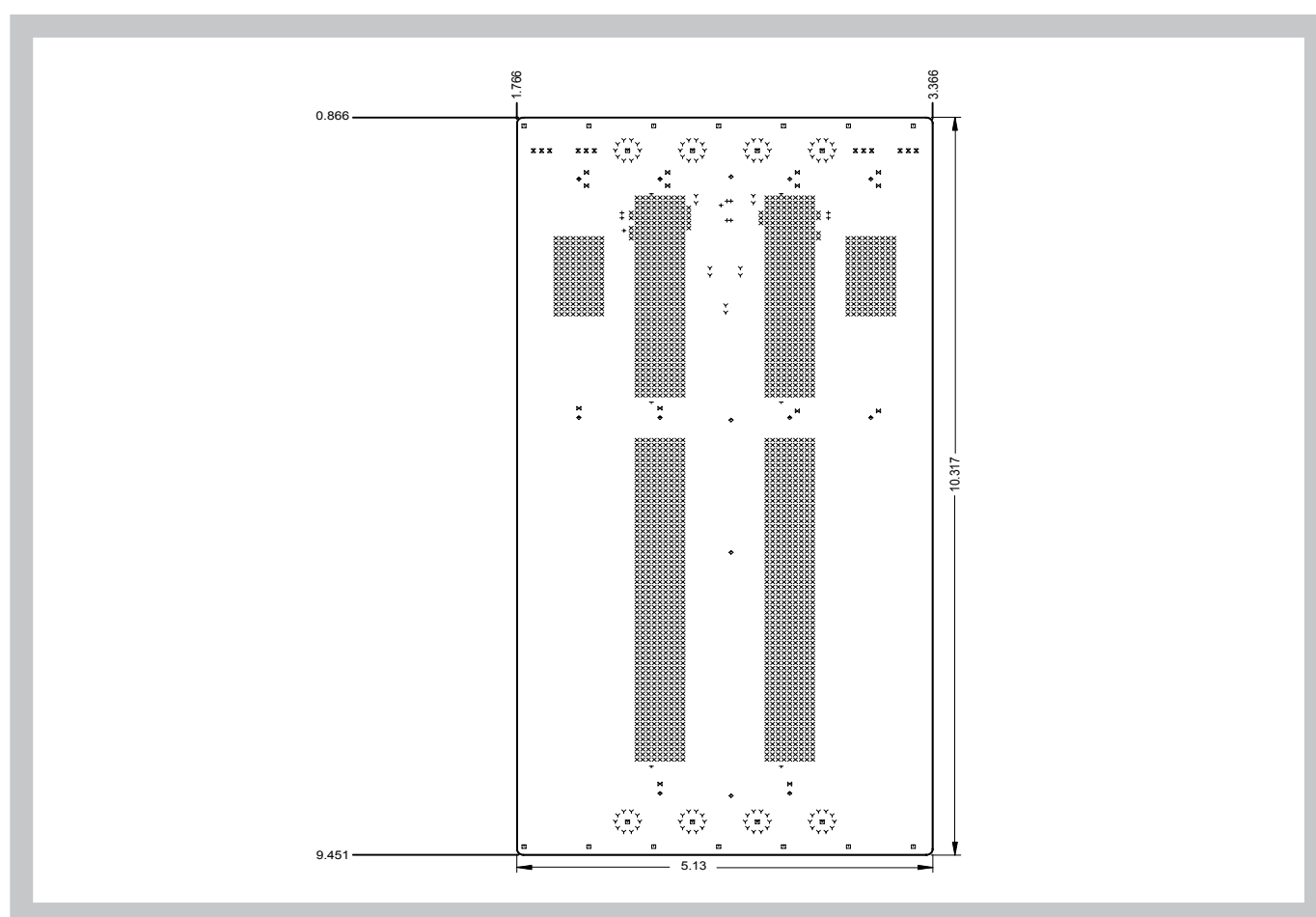
## Board Specifications

- 8 layer board (version w/o SMA)
- 2 oz. copper power and ground
- PCB, FR-4 or equivalent
- PCB .213" thick

## Mechanical Specifications

- 6U height
- 2 slots
- 10.317 x 5.15 inches
- Multi Gig RT-2 connectors
- 1.6" pitch

## Line Drawings



## Order Information

Height	Total Slots	Description	Order Number
6U	2	3U/6U 2-Slot VPX Test Backplane with MultiGig™ cable interface	1900002311-0000R