



Slimkit 10 FTTx

THE SOLUTION FOR CUSTOMER-SPECIFIC CABLE END DISTRIBUTORS

SYSTEM SOLUTIONS
ENCLOSURES & COMPONENTS
ROTARY SWITCHES

A BOX WITH NUMEROUS POSSIBILITIES

Elma makes it possible to offer customer-specific 19" distributor boxes for fiber optic cables. Nowadays, many operators of fiber optic networks aspire to be clearly identifiable even in distribution centers. With the Slimkit 10 FTTx, Elma Electronic has the solution. This 19" modular insert can be fully tailored to customer-specific requirements.

The front plates of the modular insert can be freely designed and printed, meaning that a customer-specific logo is no problem. The customer decides how many and which connectors (e.g. LC, SC, MPO, etc.) are included in the front plate.



THE RIGHT BOX FOR FIBER OPTIC CABLE CONNECTIONS

Suitable for any 19" fitting system, the Slimkit 10 FTTx can be perfectly incorporated into existing distribution systems.

Application-oriented versions

- › Cable entries and fastenings on the rear on request
- › Customer-specific front plates of aluminum or steel (incl. printing)
- › Printable enclosure
- › Customer-specific from a quantity of 50
- › Short delivery times
- › Wide range of accessories
- › Re-usable packaging
- › Direct consultation

RECESSED FRONT

- › The mounting brackets are adjustable. In this way, the enclosure front can be easily shifted backward in order, for example, to ensure more space for the connectors and cables protruding from the front.

FOLDING TRAY

- › A pull-out folding tray simplifies work on the cable distributor or cable cassettes. In the case of splice cassettes, the cable/optical fibers disappear into the storage space below the tray.

CABLE STORAGE SPACE

- › The depth of 220 mm ensures sufficient space for storing fiber optic cables with an adequate radius.

CABLE INSERT AND MOUNTING OPTIONS

- › Various cable inserts are provided on the sheet steel at the rear and can be easily cut out on request.

POSSIBLE VERSIONS

BASIC ENCLOSURE

- › The pre-galvanized sheet steel basic enclosure serves as a basis.

CABLE INSERTS AND STRAIN RELIEF

- › Customized cut-outs for cable inserts and strain-relief systems can be arranged and positioned on the rear. Blanking plates, dust covers and side inserts are optionally available.

CHASSIS, TRAYS

- › The intended purpose determines the design. No matter whether it is used as a cable distributor, for cassette systems (possible up to height of 21 mm) or cable termination. We have the right solution. Cover and tray are optional and can also be omitted.

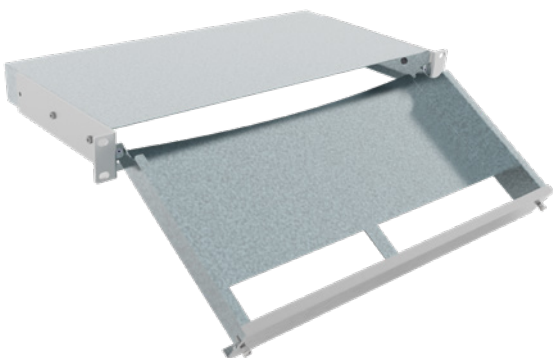
FRONT PANELS

- › The aluminum or steel front panel is the calling card of your product. You determine the number and type of connections (connector types), the coating, and the printing. If your customer wants his own logo on the front panel, it is simply printed on. Everything up to photorealistic imprints is possible.

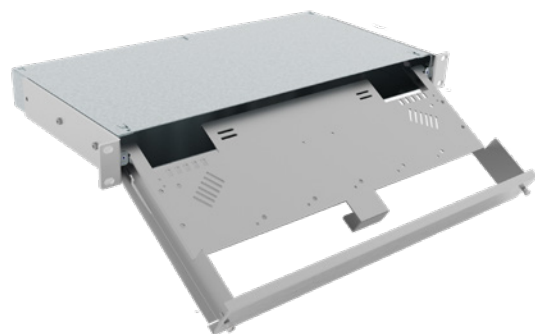
REUSABLE PACKAGING

- › The packaging is designed so that it can be used multiple times. This means that we deliver the packaged enclosure to you, you equip it with your components, screws, etc., and then pass on the enclosure to your customer with the same packaging..

Splitter for termination fiber optic cable



End distributor for splice cassettes





**Elma Electronic AG,
Switzerland**

Hofstrasse 93
CH-8620 Wetzikon
T: +41 44 933 41 11
F: +41 44 933 42 15
sales@elma.ch

**Elma Electronic GmbH,
Germany**

Stuttgarter Strasse 11
D-75179 Pforzheim
T: +49 7231 97 34 0
F: +49 7231 97 34 97
info@elma.de

Elma Electronic France SA

16 rue de Hannah Arendt
Parc des Forges
F-67200 Strasbourg
T: +33 38 56 72 50
sales@elma-electronic.fr

Elma Electronic UK Ltd.

Solutions House
Priory Business Park
Fraser Road
Bedford MK44 3BF
Great Britain
T: +44 1234 838822
F: +44 1234 836650
sales@elma.co.uk

Elma Electronic Romania SRL

Chisoda, DN 59 km8 + 550m
RO-307221 Judetul Timis
T: +40 374 480 400
F: +40 256 249 820
sales@elma.ch

Elma Electronic Israel Ltd.

34, Modi'in St., I.Z.Sgula
IL-49271 Petach-Tikva
T: +972 3 930 50 25
F: +972 3 931 31 34
sales@elma.co.il

Elma Electronic Inc., USA

44350 S. Grimmer Blvd
Fremont, CA 94538, USA
T: +1 510 656 3400
F: +1 510 656 3783
sales@elma.com

Optima Stantron, USA

1775 MacLeod Drive
Lawrenceville, GA 30043, USA
T: +1 770 496 4000
F: +1 770 496 4026
sales@elma.com

**Elma Electronic Private Ltd.,
India**

Green Arch
3rd Phase 1st Main
J.P. Nagar
Bangalore 560078
sales@elma.com

**Elma Electronic Technology
(Shanghai) CO., Ltd.,
China**

No. 11 Building, No198
Chang Jian Road,
Bao Shan District
CN-200949 Shanghai
T: +86 21 5866 5908
F: +86 21 5866 5918
sales@elmachina.com

**Elma Asia Pacific Pte. Ltd.,
Singapore**

8 Ubi Road 2
07-14 Zervex Building
SG-408538 Singapore
T: +65 6479 8552
F: +65 6479 8662
sales.elmaap@elma.com

Your local solution partner