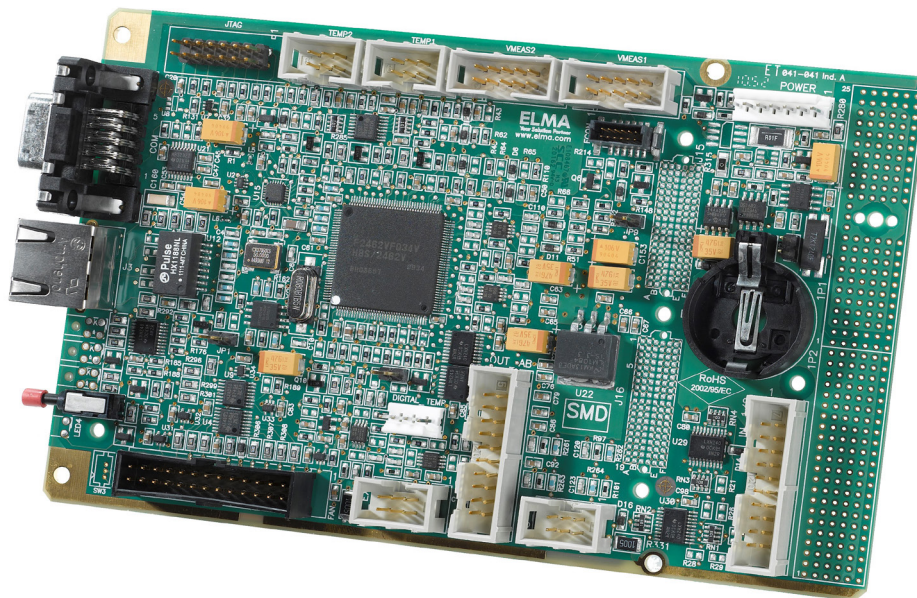


## DESCRIPTION

The Sysmon3Gen is available in two different versions. Fix mounted and pluggable version. The Sysmon3Gen is a platform-independent system monitoring unit which monitors the internal parameters of a System Platform such as voltages, currents, temperatures and fan speeds.



The monitored parameters of the System Platform are measured or read in and analyzed at regular intervals. If a parameter value exceeds or falls below a user-defined limit, the Sysmon detects this as an "Event". In principle, fixed predefined actions are carried out when the corresponding events occur. It is also possible to use such Events to trigger one or more of the digital Outputs.

The Sysmon3Gen uses Sensor Data Records, compliant to IPMI 2.0, to describe the monitored System parameters.

Using SDRs a name can be specified for every monitored parameter, digital input and output.

For any measured parameter up to 6 thresholds can be defined: lower non critical, lower critical, lower non-recoverable, upper non critical, upper critical and upper non-recoverable

For the pluggable version any limit infringements occurring for 3.3V, 5V, 12V, -1.2V voltages, temperatures and fans are signaled via the front-panel LEDs.

The measured values are retrievable at any time via the RS232 serial interface and via Telnet. In addition limits and system parameters can be changed at any time with the unit in service. As a result the Sysmon – and hence the connected system - can be controlled and monitored online via any computer with an Internet connection.

To complete the information spectrum the integrated web page which the user can design himself, is also continuously updated with the measured values.

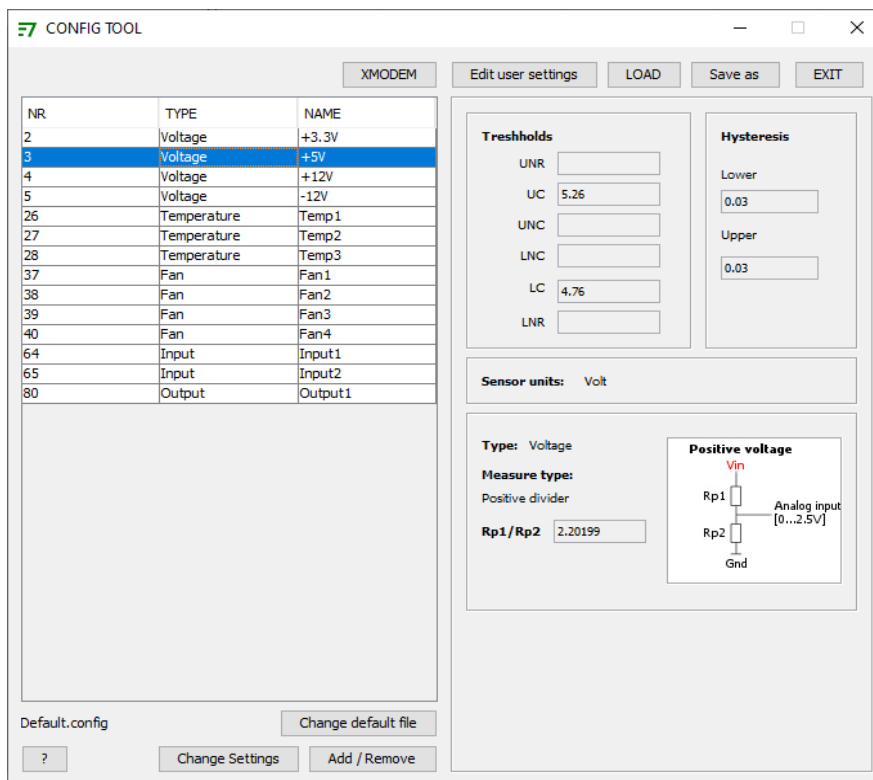
When the Sysmon is used in VME systems it generates the ACFAIL\* and SYSRESET\* VME signals in accordance with VME specification ANSI/VITA 1-1994.

## FEATURES

- Voltage monitoring (up to 8 voltages)
- Temperature monitoring (up to 6 analogue NTC and 8 digital I2C LM75 sensors)
- Fan monitoring and control (up to 12 fans. Each fan needs a tachometer output as well as a PWM signal input)
- Digital inputs (16 digital inputs, 5V TTL, two input types: ON-OFF or momentary switch for push buttons)
- Digital outputs (16 digital outputs)
- Generating VME signals (ACFAIL and SYSRESET according to VME specification ANSI/VITA 1-1994)
- LED display support
- RS232 and Ethernet interface
- SNMP V1 and V2c support
- Configurable via „ELMA Config-Tool“
- Optional: current monitoring (monitoring up to 4 currents, ELMA Hall-Sensorboard is needed )

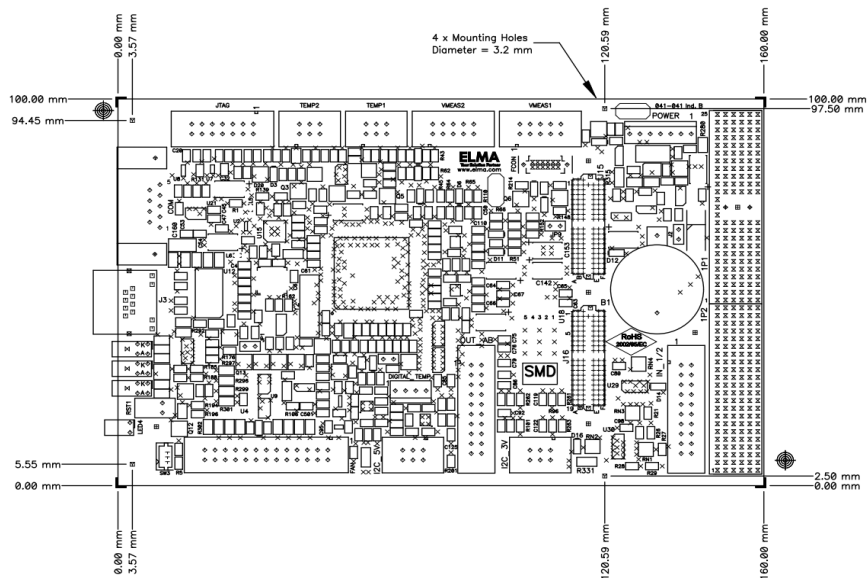
## ELMA “CONFIG TOOL”

The SysMon Configuration Tool is able to program the SysMon via a serial COM port. New firmware, web pages, configuration files and factory settings can be sent to the SysMon. The configuration procedure is relieved by a graphical user interface. With a few clicks and by typing in values such as the limits when an event should emerge, the user is able to configure User Settings, Sensor Data Records and output pins respectively LEDs.



**TECHNICAL DATA / DIMENSIONS**

Power supply	+5 V DC
Current consumption	500 mA max.
Operating temperature	0 °C to +70 °C
Storage temperature	-40 °C to +85 °C
Humidity	95 % non condensing
Physical dimensions	100.00 x 160.00 mm (PCB)
Load of PWM Signal	short-circuit-proof to GND. Open Collector
PWM signal level	5V TTL
Signal level - inputs	5V TTL
Signal level - outputs	5V TTL
Max. loading - outputs	IOH: -25 mA IOL: 25 mA



Dimensions PCB of fix mounted version 041-039

## ORDER CODE

---

<b>Part number</b>	<b>Description</b>
041-039	Fix mounted version
042-641	Pluggable version with front panel. (a suitable mating connector slot for the Sysmon must be available on the backplane!)
060-013	LED display for 041-039 complete with 0.9 m cable and mating connector ( front plate not included in delivery)
041-855	FanController add-on module for controlling fans without PWM signal input
042-751	Adapter board for pluggable version 042-641
044-003	Set consisting of pluggable version 042-641 and adapter board 042-751
041-970	Hall-Sensor board (5V/50A 3.3V/50A 12V/20A -12V/20A) – analogue output. See data sheet for more information
Art.No on request	Hall-Sensor board – analogue output and I2C interface For more information and product variants see data sheet

Ruggedized version (extended temperature range, conformal acrylic coating) available on request.