

VITA 62 Power Supply Module

Conduction Cooled - AC & DC Versions



Description

Elma's conduction cooled power supply modules are designed to meet the requirements of VITA 62 for use in harsh environments. Available for use in either AC or DC systems, they are 6U high by 5HP (1-inch) wide modules with guide blocks, for use in VPX systems.

The modules can be easily tailored to suit individual requirements, and are always closely designed with the complete system in mind to ensure the the best overall EMC performance. The power supply modules incorporate custom machined cold plates to ensure high mechanical strength and optimum thermal performance.

The modules are designed to meet MIL-STD-810 to withstand extremes of temperature, vibration, shock, and humidity. They are well suited to perform in the most demanding applications, such as those found in vehicles, fast jets and naval applications. With additional external components, the modules can be EMC sealed to MIL-STD-461.

Features

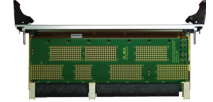
- 6U x 5HP plug-in module with VITA 62 compliant connector and guide pins with screw-lock ejector handles
- 5 segment locking card retainers for increased thermal performance
- Up to 700W output power *(final output power is dependent on final configuration)*
- No minimum load requirements and and > 80% efficiency
- Voltage rise-time control (DC version only)
- Front panel status LEDs



Related Products and Applications

Highly integrated applications such as:

- Open frame test chassis - need a chassis for your backplane?
- VPX Embedded Computing Products - SBCs, Switches, Storage and More



- VPX board extenders
- Load Boards
- Rear Transition Modules (RTMs)
- Test and power modules
- VPX Cabling assemblies

VPX

VITA 62 Power Supply Module

Conduction Cooled - AC & DC Versions

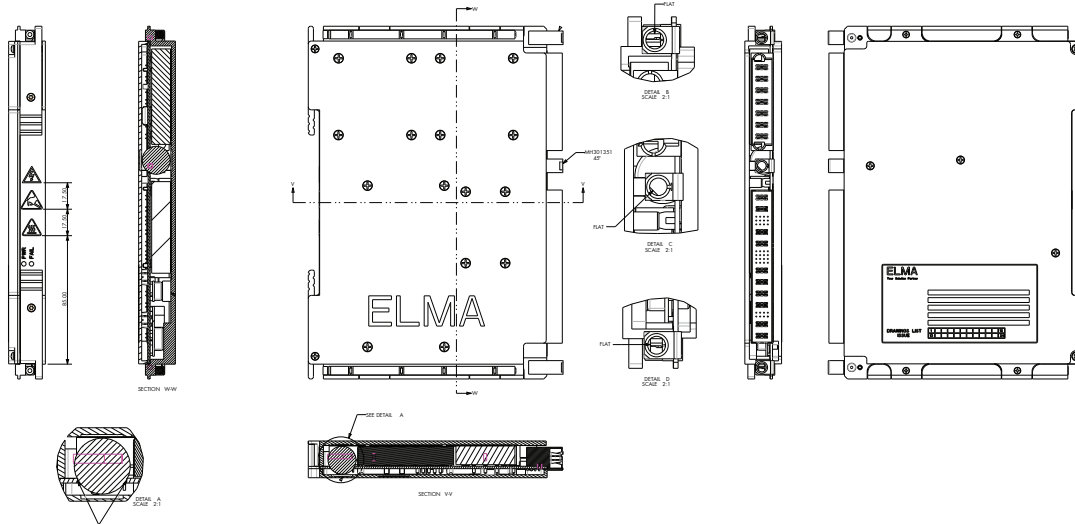


VPX



Power

Line Drawing



Specifications

Input / Output	<p>AC Version: Input 100 – 240V AC, 50-60Hz* Output 1 Voltage +12V DC Output 1 Power Up to 600W Output 2 Voltage +5V DC Output 2 Power Up to 70W Output 3 Voltage +3V3 AUX Output 3 Power Up to 20W Output 4 Voltage +12V AUX Output 4 Power Up to 10W</p> <p>(*The unit will operate at 400Hz but may not meet the power factor or total harmonic distortion specifications ** For parallel operation please contact Elma UK for clarification of your requirement)</p>	<p>DC Version: Input 18 – 36V DC Output 1 Voltage +12V DC Output 1 Power 500W Output 2 Voltage +5V DC Output 2 Power 200W Output 3 Voltage +3V3 AUX Output 3 Power TBA</p>
Environmental	Altitude, Vibration, Shock, Acceleration & Humidity to meet MIL-STD-810F EMC to meet MIL-STD-461 (with additional components) Transient protection to meet MIL-STD-704 (with additional components)	
System	Operating & storage temperature range -40°C to +85°C (with de-rating) Integrated input filter, ENABLE# and NHIBIT# input and input transient protection Current share with another module, PSU OK signal, 0.99 power factor correction	
Options	Commercial, industrial or military grade modules Conformal coating +3.3V / +12V / -12V AUX configuration	

Order Information

DC Version, Model Number: MS216479+RC

AC Version, Model Number: MS217765+RC

Please contact Elma Electronic sales for further details.

China: +86 21 5866 5908
 France: +33 437 06 21 10

Germany: +49 7231 97 34 0
 Israel: +972 3 930 50 25

Singapore: +65 6479 8552
 Switzerland: +41 44 933 41 11

United Kingdom: +44 1234 838 822
 United States: +1 510 656 3400

For other countries, please visit our website.

Elma Electronic • www.elma.com