

Description

This 6U OpenVPX backplane features 9 slots in a centralized switch topology with 1 payload and 8 peripheral slots with up to 3.125 Gbps per channel. Options for RTM connectors (rear transition modules) for rear I/O support.

Elma offers a variety of backplane topologies to support a wide range of system interconnect requirements. Our VPX backplanes are designed in accordance with the relevant Backplane Profile Descriptions provided within the current ANSI-VITA 46.0 and ANSI-VITA 65 standards.

Features

- Compliant to ANSI/VITA 65-2012
- Compliant to ANSI/VITA 46.0-2013
- High-speed Velox connector
- Rugged Eurocard form factor in 6U height
- Provides built in ESD ground protection in every slot

Board Specifications

- 14 layers
- 2 oz. copper power and ground
- PCB FR-4 or equivalent
- PCB 0.212" thick

Mechanical Specifications

- 6U height
- 9 slots
- Velox connectors

Slot Profiles

- Slot 1: SLT6-PAY-8F-10.2.3
- Slot 2 - 9: SLT6-PER-2F-10.3.2

Related Products and Applications

Highly integrated applications such as:

- Integrated display processing, mission management and navigational control for avionics systems
- Industrial monitoring, medical equipment, and night-vision systems requiring enhanced graphics capabilities
- Shipboard systems for target tracking and high definition displays
- Applications requiring a mix of I/O options, high compute density and enhanced graphics

- Load boards convection or conduction cooled
- Rear Transition Modules for I/O
- Intel & Freescale Single Board Computers
- Blade level networking boards (Ethernet, PCI Express)
- Rackmount, desktop, and ATR chassis platforms
- Ruggedization programs

VPX

6U 9-Slot OpenVPX Backplane

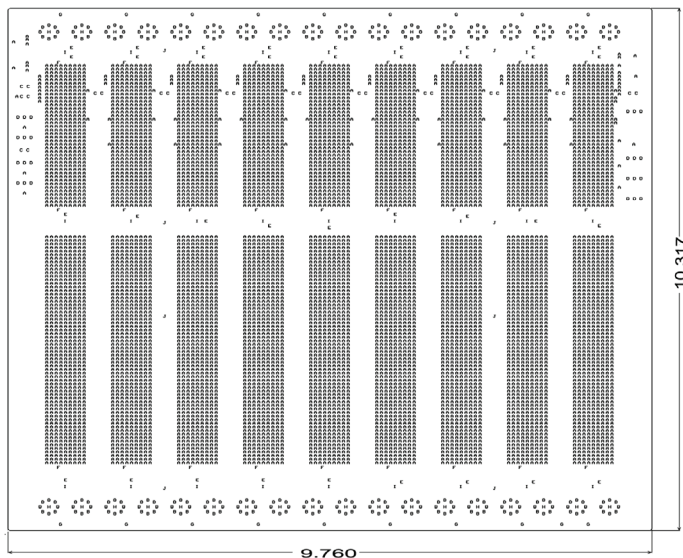
BKP6-CEN09-11.2.13-n



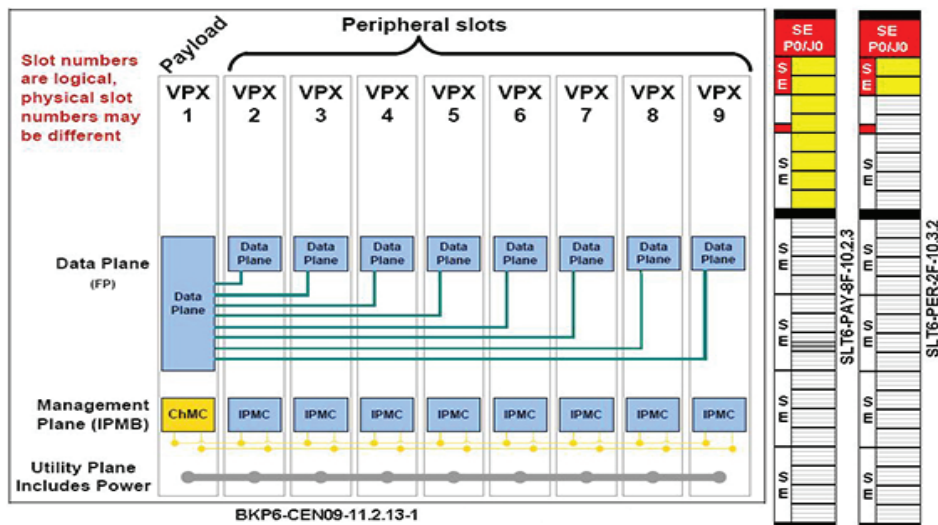
VPX

Backplanes

Line Drawing



Backplane Topology



Order Information

Height	Total Slots	Description	Profile Number	Part Number
6U	9	VPX central switch, up to 3.125 Gbps per channel	BKP6-CEN09-11.2.13-1	1OVX609VX1-1X01R
6U	9	VPX central switch, up to 3.125 Gbps, no RTM connectors	BKP6-CEN09-11.2.13-1	1OVX609VX1-1X00R

Please contact our sales for more details.

China: +86 21 5866 5908
France: +33 437 06 21 10

Germany: +49 7231 97 34 0
Israel: +972 3 930 50 25

Singapore: +65 6479 8552
Switzerland: +41 44 933 41 11

United Kingdom: +44 1234 838 822
United States: +1 510 656 3400

For other countries, please visit our website.

Elma Electronic • www.elma.com