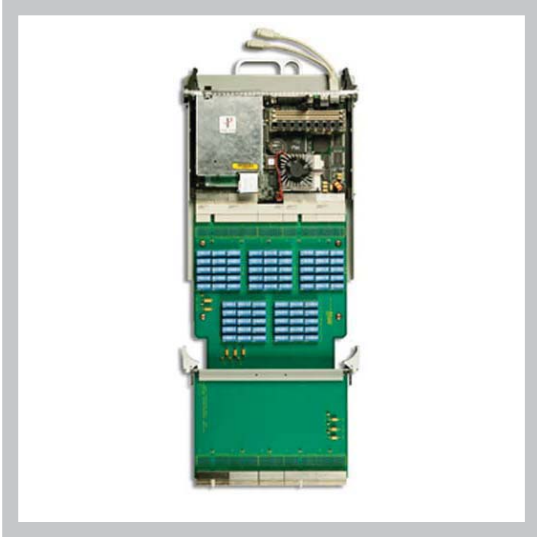


COMPACTPCI TEST EXTENDER



FEATURES

- Designed to meet mechanical and electrical connection requirement of PICMG 2.0 Rev 3.0
- Test points for all lines on each 2mm HM connector in P1-P5
- Each line in rows A-E of the 2mm HM connector can be individually switch isolated
- External ground planes for mechanical protection and EMI/RFI shielding
- IEEE 1101.10 compatible injector/ejector handles
- Metal frame securely holds test board in place

BOARD SPECIFICATIONS

- 12-layer stripline design
- PCB UL recognized 94-V0
- PCB FR-4 or equivalent
- PCB .062" thick

MECHANICAL SPECIFICATIONS

- 6U x 400mm

DESCRIPTION

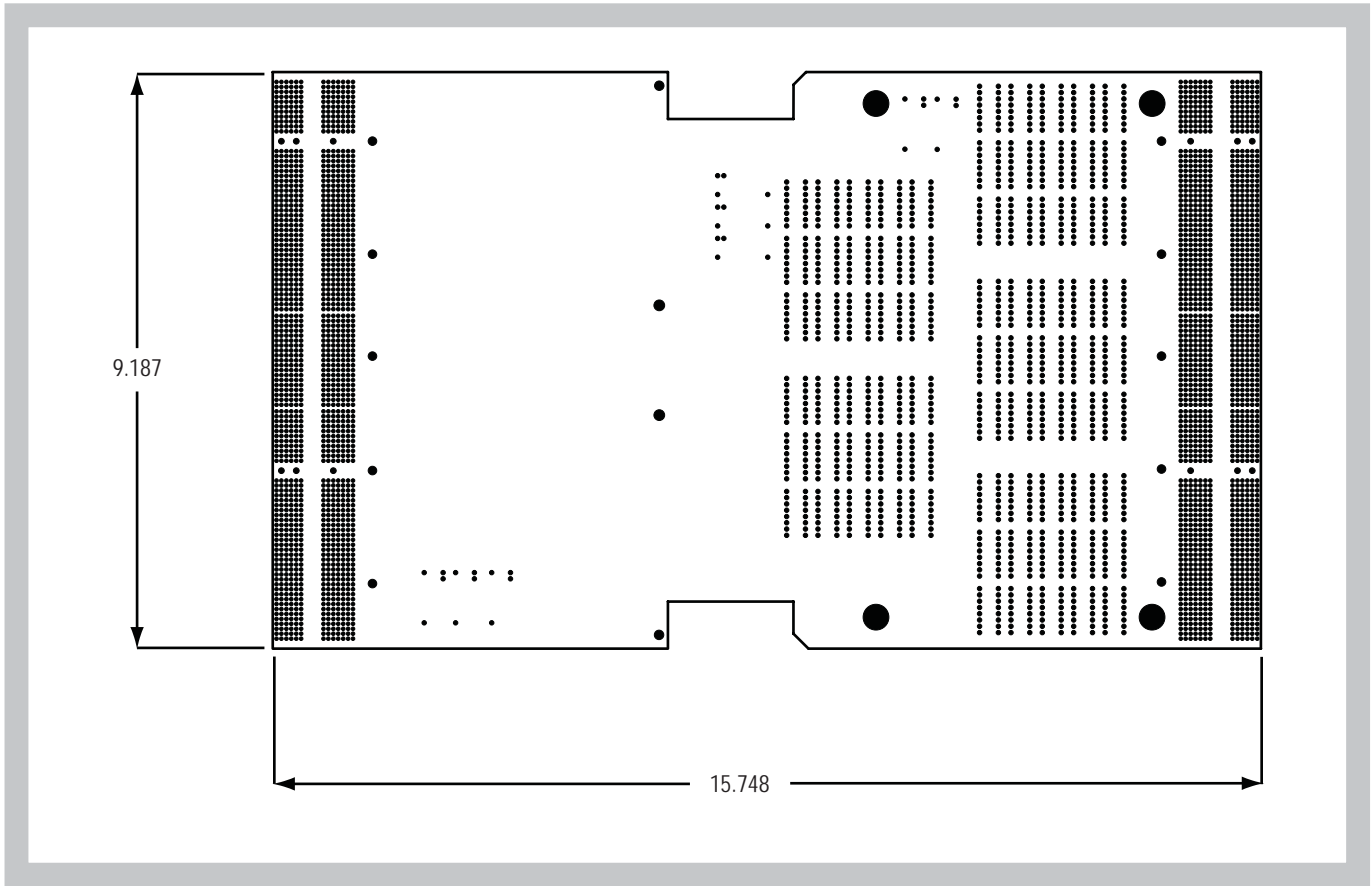
Elma Bustronic CompactPCI test extenders have been designed to meet mechanical and electrical connection requirement of PICMG 2.0 Rev 3.0

The cPCI extender boards are designed to bring a circuit card completely out of a card cage or enclosure so that it can be tested or debugged. This provides access to both sides of the test board. There are test points for all of the lines on each 2mm HM connector in P1-P5. Each line in rows A-E of the 2mm HM connector can be individually isolated with the DIP switches. The cPCI extender board accommodates use in 6U x 400mm chassis.

The cPCI extender has a secure metal frame to firmly hold the extender board to the test board. It also has ejector/injector latches, allowing the extender board to lock into the chassis. Additional features include high and low frequency decoupling capacitors five signal layers and seven power and ground planes. Elma Bustronic test extenders are designed to maximize performance, minimize noise and give the customer the most reliable, cost-effective products possible. The rugged card guide handles securely hold the test board, ensuring a reliable connection.

COMPACTPCI TEST EXTENDER

LINE DRAWING



ORDER INFORMATION

Height	Length	Part Number
6U	400mm	69-BEX616-CPCI