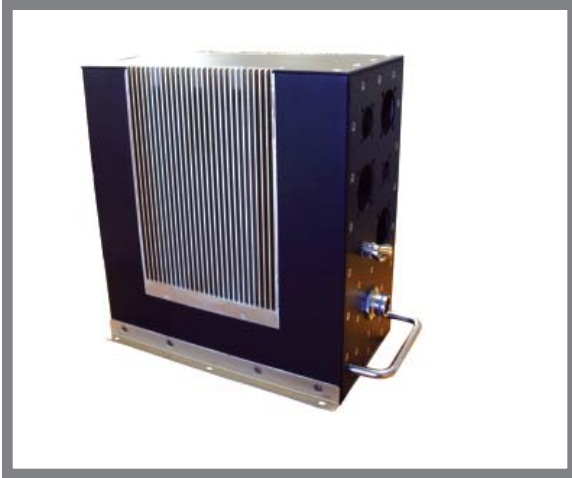


ATR Products - Conduction Cooled

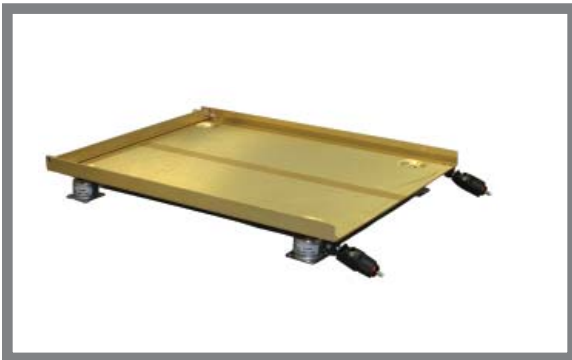
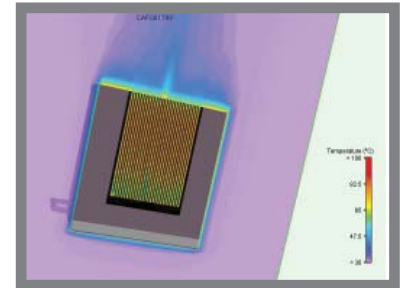
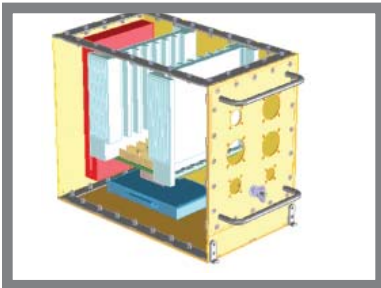


FEATURES

- Meets ARINC 404A, ARINC600 and IEEE 1101.2 specifications
- Operating temperature range of -40°C to +70°C
- Low weight, ideal for applications where the weight is critical
- Backplane options for VME/64X, cPCI, VXI, VPX, MicroTCA and custom
- Features a MIL 38999 type power connector with an integrated line filter
- Power supply and line filter combination are optimized to meet MIL-STD 461E
- Rugged aluminum dip-braided construction is designed to meet MIL-STD 810F for shock and vibration
- Optimized for cooling via thermal simulation studies

PRODUCT INFORMATION

Elma's conduction cooled ATR platforms provide the highest level of environmental protection with exceptional thermal performance. The heat load is transferred via wedge locks from the boards to the machined platform walls with the integrated card guides. The ATRs accept all 3U and 6U boards complying with IEEE 1101.2. The cooling concept of all conduction cooled ATRs is optimized by thermal analysis. The chassis parts are made from special grade aluminum and joined by a dip-braising process to ensure the best conductivity of heat load. All removable covers are equipped with captive screws.



ATR TRAY

- Meets ARINC 404A specification
- Sized for a short and long ATRs
- Guide pins allow ease for blind-mating insertion
- Tray is shock isolated via four mounting points

ORDERING INFORMATION

Size	Part Number
1/2 short	TATR-AS-S
3/4 short	TATR-BS-S
3/4 long	TATR-BL-S
1 long	TATR-CL-S
1 1/2 long	TATR-DL-S